

GREAT PLAINS GREATER POSSIBILITIES

GPHC Annual Conference 2025



Table of Contents

Conference Schedule	3
Parking Information	4
• Directional Instructions	
• Friday	
• Saturday	
• Sunday	
Building Maps	7
• University Union Map	
• Gateway Center Map	
Wifi Access	9
Keynote Speaker & Highlights	10
• Jannon Fuchs, PhD.	
• darkEntity	
• Honors College Programming Counsel (HCPC)	
• The Syndicate at the University Union	
Poster Session Information	13
Boe Paper Awards	22
Oral Presentation Information	27
Thank you	37

Conference Schedule

Friday, March 7

12:00-6:00pm	Check-In, Union 394
2:00-4:00pm	Poster set up, Union 333
4:00-6:00pm	Poster session, Union 333
6:00-8:00pm	Welcome dinner and Keynote, Union 314
8:00-9:30pm	Student Event, Union Syndicate
8:30-10:00pm	Faculty/staff event, Denton Square

Saturday, March 8

8:00-8:50am	Boe Award presentations, Various rooms, Ground floor of Gateway Center
9:00-9:50am	Oral presentation session #1, Various rooms, Ground floor of Gateway Center
10:00-10:50am	Oral presentation session #2, Various rooms, Ground floor of Gateway Center
11:00-11:50am	Oral presentation session #3, Various rooms, Ground floor of Gateway Center
12:00-12:30pm	Box lunches, Banquet Room, Gateway Center
12:30-1:00pm	Load buses for excursions, Front Parking Lot, Gateway Center
1:00-6:00pm	Excursions in DFW
6:45-8:30pm	Dinner, Awards, and Keynote, Banquet Room, Gateway Center

Sunday, March 9

8:00-9:00am	GPHC business meeting, Sage 342
-------------	---------------------------------

Parking Information Important Addresses

University Union

1155 Union Cir, Denton, TX 76203

Union Circle Garage

1115 W Chestnut St, Denton, TX 76201

Gateway Center

801 N Texas Blvd, Denton, TX 76201

We are excited to welcome you to the Great Plains Honors Council Conference at UNT! To help ensure a smooth arrival, please review the following parking information and be aware of significant road construction near campus, particularly on the east side near the UNT Union. The City of Denton has been working on extensive road projects in the area and the detour situation changes on a daily basis. We recommend following detour signs along Welch Avenue and review the maps and parking updates available on the UNT Parking Site before you make your way towards campus.

UNT Parking Website



Friday Parking

Parking near the University Union will be available at the following lots:

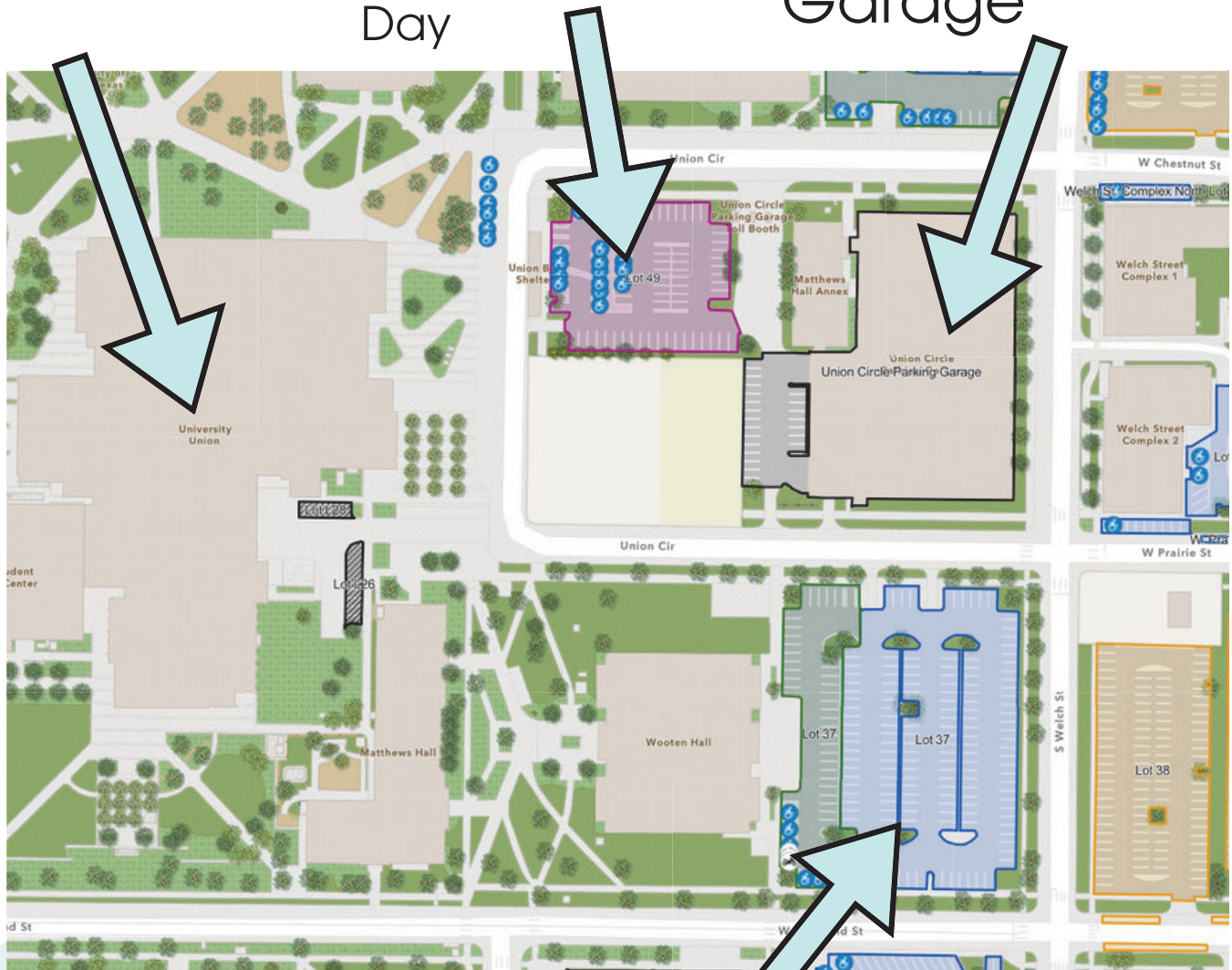
11:00AM- 10PM

- Lot 49
- Lot 37
- **Third floor** of Union Circle Garage (after 5PM **All levels** of the UCG are available)

University
Union

Lot 49
Available All
Day

Union Circle
Garage



Lot 37
Available All
Day

#GPHC2025 5

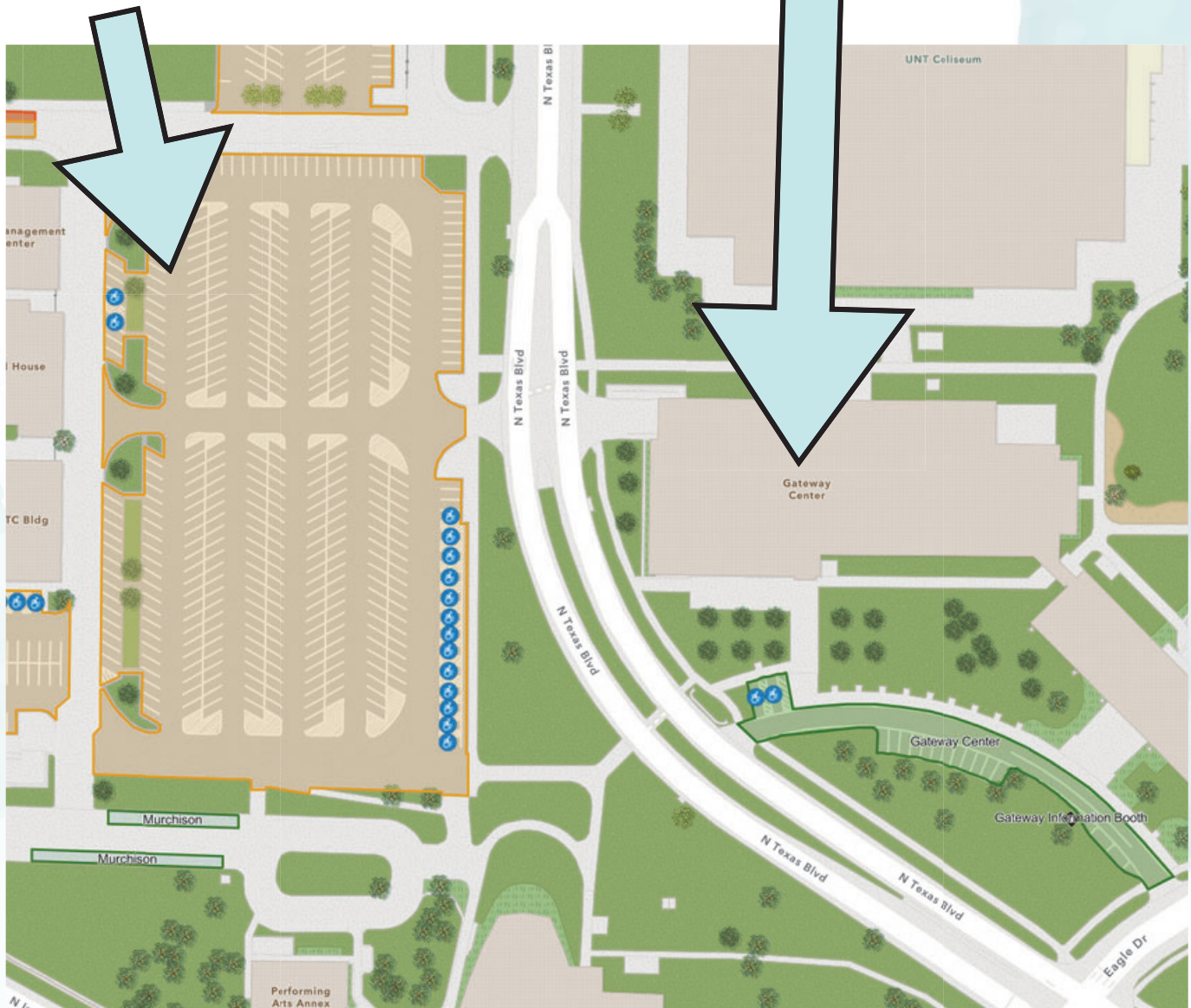
Saturday Parking

Parking near the Gateway Center will be available in Lot 20 all day.

Lot 20

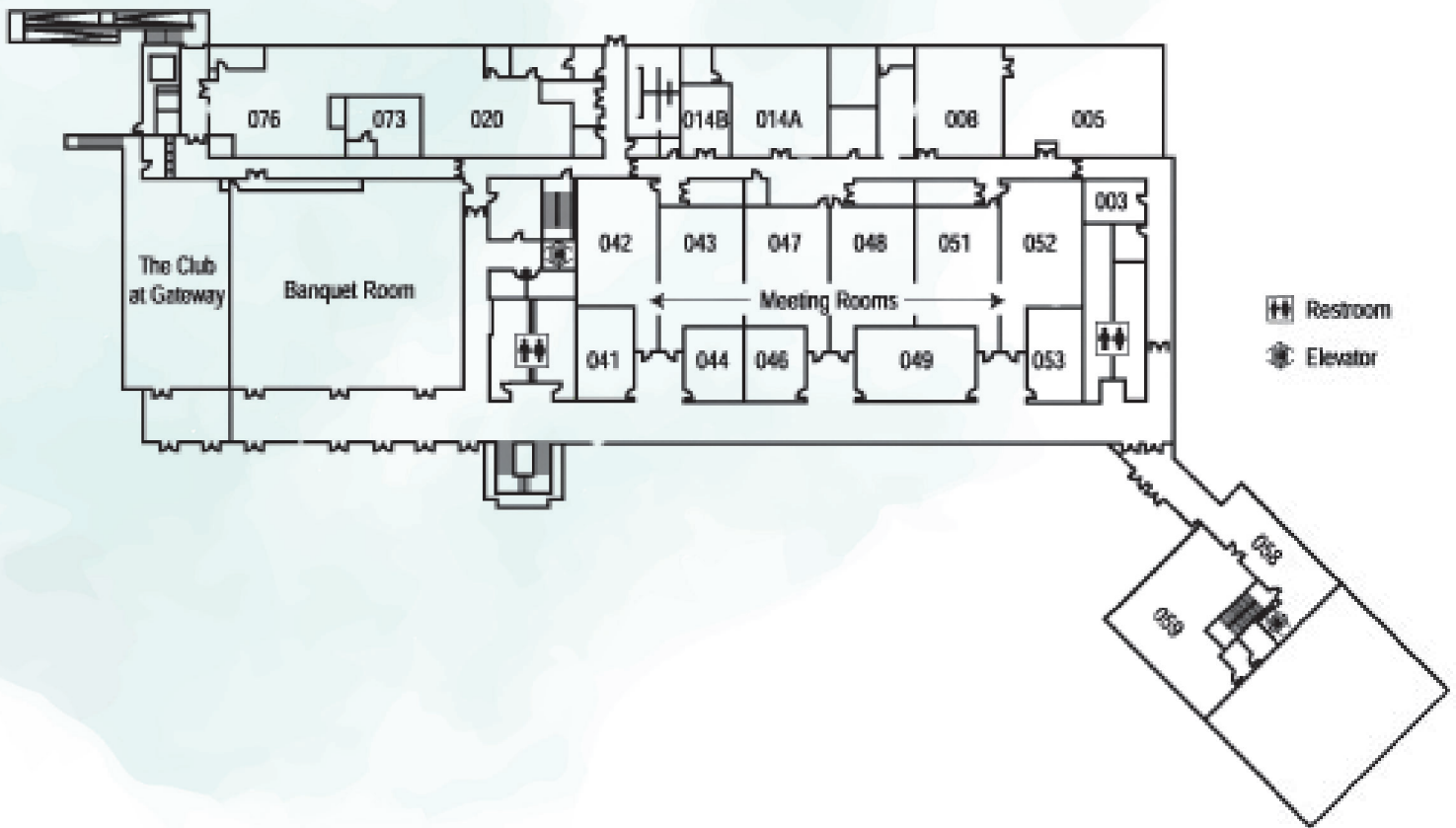
Available All Day

Gateway Center



Building Maps

Gateway Center Ground Floor





UNIVERSITY UNION

MAP

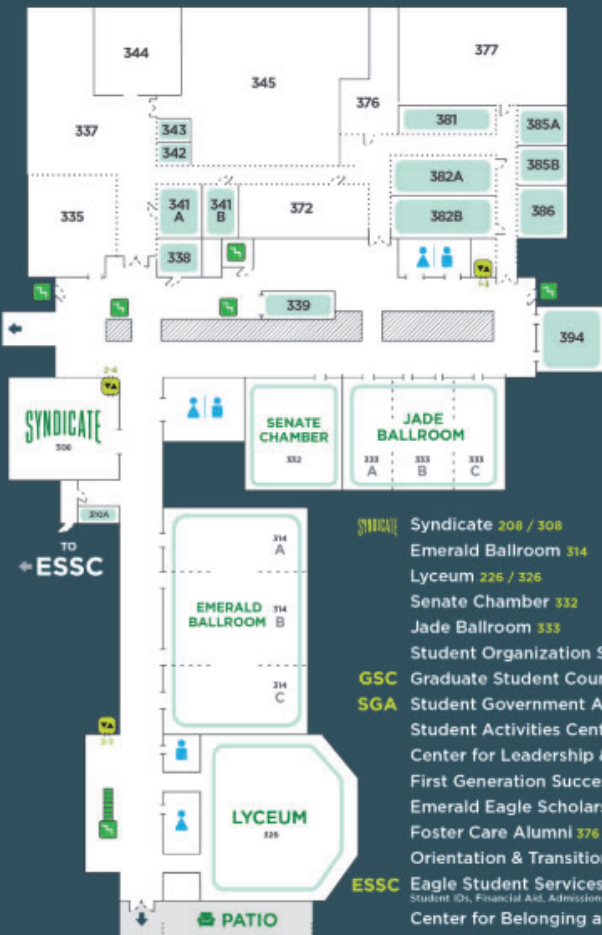
1



2



3



4



MAP KEY



WiFi Access

UNT has 3 wifi networks available. For the UNT or Eaglenet networks you may use the credentials we provide you. For Eduroam, you will need the credentials provided by your university (if your university participates in Eduroam).

UNT Network - Secure Network (**Preferred**)

Eaglenet - Open Network - This system is not secure and is **NOT** intended for internet activity that may involve private/personal data.

Eduroam - Secure Network allowing students, faculty, and staff to access wireless networks at participating Universities.

Having Trouble Connecting?



UNT System Wifi Website



Friday Keynote & Highlights

Jannon Fuchs, PhD.

Jannon Fuchs was fascinated by Neuroscience before it was a word. She received her BA in Biology from the University of Chicago, MS in Psychology from M.I.T., and PhD in Neurosciences from the UC San Diego. She did research at UC Irvine and the University of Illinois, and in Germany and Japan, and UT Southwestern Medical School. She was an Assistant Professor of Psychology at the University of Texas at Dallas for 4 years before joining the faculty at the University of North Texas in 1989, where she is Professor of Biological Sciences. Her current research was ignited by using a rogue antibody which revealed that most brain cells have a primary cilium. They were at that time dismissed as vestigial, but 400 million years is plenty of time for evolution to figure out how to discard a useless organelle! Her lab's journey to characterize the elusive primary cilium led to evidence that it is essential for shaping brain development and defects result in epilepsy and other neurological disorders.



Dr. Fuchs' mentoring career took off at age 12, when she was set up by her band director to teach clarinet lessons. She delights in working with students, whether they are learning clarinet or neuroscience. She is a long-time champion of Undergraduate Research, cheering on students as they present posters, write Honors theses, become Goldwater Scholars, and enter the graduate programs of their dreams. She received the 2023 Goldwater Scholars Mentor Award from the Council on Undergraduate Research and the Goldwater Foundation, and UNT's 2024 Knight award for excellence in mentoring students and faculty. She is currently working with the Dana Foundation to organize a field she calls NeuroClimate. In addition, she performs music, raised three children, spoils her grandchildren, has traveled solo in five continents, explores underwater worlds by scuba diving in Cozumel, Fiji, Honduras, St. Lucia, Galapagos, and Curacao, and she likes to write vignettes inspired by the humor in everyday life.

Student Social

Honors College Programming Council (HCPC)

The Honors College Programming Council (HCPC) is the official student organization of UNT's Honors College. HCPC provides meaningful opportunities for students to engage with the Honors College community outside of the classroom. Each semester, HCPC hosts around 15 events that are attended by over 600 students. Our programs are separated into five categories, and each area is led by a Programming Chair: Art, Community Engagement, Inclusive Cultures, STEM and Student Activities.

In all of our programs, we aim to strengthen student connections within our Honors College community and beyond. We're excited to be a part of this year's GPHC team, and we look forward to seeing you at the 2025 GPHC social!



University Union Syndicate

The Syndicate is one of the most popular spaces in UNT's Union. It's a two-floor hangout space with a sports lounge feel often used for events like open mic nights, performances by bands and stand up comedians, watch parties for awards ceremonies, the Olympics, and the Super Bowl, and much more. All televised UNT Athletics events are shown in the Syndicate and UNT Jazz bands play on the Syndicate stage several times a week. Be sure to check out the pool tables and video gaming stations on the second floor



Saturday Keynote Performance

darkEntity

Through their infectious melodies and euphoric soundscapes, darkEntity crafts an emotional journey that leaves you fully immersed. Get lost in their universe as you step through portals to worlds beyond and dance into the night. darkEntity was formed in 2023 by Michael Casiano and Andrew Rubio and strives to make their mark in the dance music scene.



Poster Session Information

4:00PM-6:00PM
Union 333

Humanities

Bonnie and Clyde: A Small-Town Identity

Sarah Dierflinger | Northeast Texas Community College

From Protest to Pride: The Evolving Identity of Texas' Chicano Murals

Stephanie Hernandez | Northeast Texas Community College

Juvenile Justice and Legal Literacy

Clara Rodriguez | Texas A&M University-San Antonio

The Civilian Conservation Corps in Texas State Parks: Education During the Great Depression

Miranda Adams | Texas Woman's University

The Evolution of Gender Representation in Barbie Commercials: A Historical Analysis

Abi Agrawal | Midwestern State University

Confucianism, Buddhism, and Taoism: A Comparative Exploration

Anna Contreras | McLennan Community College

Traditional Ecological Knowledge and the Politics of Epistemology

Lilah Crum-Barnhill | University of Missouri - Kansas City

Did the #MeToo Movement Have an Effect on Domestic Violence in Bexar County

Madonna Morales | Texas A&M San Antonio

The Correspondence That Created Sacred Circles

Emily Shoemake | University of Missouri - Kansas City

Poster Session Information

4:00PM-6:00PM
Union 333

Professional Studies

A secondary analysis of the psychological capital and gratitude of high school students in Northeast Texas

Rachel Smith; Ashlyn Peppler | University of Texas at Tyler

Academic Perspectives on AI Integration in Higher Education: Feasibility and Challenges in the US and China

Vickrum Sukhlani | Lone Star College - Montgomery

A Scoping Review Examining the Relationship between Congenital Syphilis and Reproductive Healthcare Deserts

Cheyenne Barnes; Lizbeth Salazar-Sanchez | University of Texas at Tyler

How Vegetable Prices Have Changed from 2014 to 2024 in the United States.

Anne Bui | Lone Star College

Walking Out on Wall Street: The Impact of Deregulation During the 2008 Financial Crisis

Olivia Crowder | Texas Woman's University

Exploring Honors Students' Feedback on a Potential Alumni Mentor Program

Alejandra Gomez | Texas Woman's University

Representation Matters: The Impact of Healthcare Providers Cultural Competence on the Care of Marginalized Patients in the American Healthcare

Kaylee Johnson | Midwestern State University

Wash to Wellness: Interactive Solutions for Enhancing Proper Hygiene in Children.

Rapeeporn Saekow | Dallas College

Case Study: Effect of targeted exercise prescription through community-based program on individual with inclusion body myositis

Amir Sanaei Ardakani | University of Texas at Tyler

Poster Session Information

4:00PM-6:00PM
Union 333

Professional Studies (Cont.)

How effective are Accommodations for Students in their College life and how can they be Improved

Noor Ul Eman | Midwestern State University

Social Science

Overcoming Systemic Barriers to Employment: The Need to Expand Paratransit in Rural Texas for Adults with Intellectual and Developmental Disabilities

Rahma Arif | The University of Texas at Dallas

From Access to Outcomes: How Healthcare Inequities Influence Children's Sleep

Danya Husein | University of North Texas

AI and Social Manipulation: The Dark Side of Personalized Content

Amber Meadows | Eastfield Dallas Community College

Economic Indicators and Their Impact on U.S. Pharmacy Consumer Spending: A Post-Pandemic Analysis

Maddox Mear | Lone Star College

Striving for Stability: South Sudan's Path to Progress

Dynasty Poire | Rose State College

Local Currencies and Full Employment: A Monetary Circuit

Theodore Raitzer | University of Missouri - Kansas City

Gentrification in San Miguel de Allende, Mexico: The Impact of Foreigners Moving to the City

Melanie Valdez | McLennan Community College

Poster Session Information

4:00PM-6:00PM
Union 333

Social Science (Cont.)

Laughing through the lens: How sitcoms shape perceptions of feminism

Dallas Allmon | Tyler Junior College

Parental Stress and Coping Strategies While Raising a Child with Learning Disabilities

Anna Becker | Texas Woman's University

Strength-Assessing Scales in Positive Psychology

Erin Biju | Texas Woman's University

Disability Behavior Management Awareness

Nayeliz Ferreira | Texas Woman's University

Exploring the Impact of Music Therapy on Motor Symptoms in Parkinson's Disease

Gabriela Galue | Lone Star College-University Park

Understanding the Role of Childhood Trauma in the Development of Antisocial Personality Disorder (ASPD) Among Convicted Serial Killers in the U.S.: A Narrative Analysis

Ashlyn Gierling | University of North Texas

A Double-Edged Sword: How Conditional Cash Transfer Programs Influence Gender Inequality

Maddie LaRosa-Ray | Texas Woman's University

The Trump Trial: A Comparative Analysis of Morning News Coverage

Casen Lucas | West Texas A&M University

Books Meant to Soothe Might Confuse: Children's Books About Death May Interfere With Learning

Liliana Mlcak; Allie Claville | University of North Texas

Behind the TV glow: Examining causes of opinions on trans people

Sam Smith | Tyler Junior College

#GPHC2025 16

Poster Session Information

4:00PM-6:00PM
Union 333

Social Science (Cont.)

A Comparative Study of Parentification and Resiliency in Adolescents

Mikayla Spiering | Southeastern Oklahoma State University

Navigating Health Disparities in the Bisexual Community

Leslie Umaña | Texas Woman's University

A Window for Change: How did COVID-19 Create Opportunities for Post-Pandemic Transit System Renewal?

Raine Walker | University of North Texas

STEM

Detecting C. burnetti Type IVB Secretion System Proteins in Infected HeLa Cells

Paris Al-khateib | Southeastern Oklahoma State University

pH-Responsive Nanofibrils for Anticancer Drug Delivery

Abraham Ansari | University of Missouri - Kansas City

Transgenerational effects of long-term thermal exposure on desert-adapted Drosophila

Graceson Carthel | West Texas A&M University

A Comparative Analysis of Traditional and Data-Driven Smoke Detection Systems Using Machine Learning

Matthew Castillo | University of Texas at Tyler

AI-Driven Detection of Deepfakes Using Neural Networks

Mang Cin | Dallas College

Biofilm Inhibition in Contact Lenses Using Medicinal Plant Roots

Chloe DeJong | Lone Star College - University Park

Poster Session Information

4:00PM-6:00PM
Union 333

STEM(Cont.)

An Analysis of Local Therapeutic Treatments for Cutaneous and Mucocutaneous Leishmaniasis: A Systematic Review & Meta-Analysis

Aashita Doshi | University of Texas at Dallas

Influence of Wave Exposure and Nutrient Availability on Macroalgal Communities in Rocky Intertidal Tide Pools of Appledore Island, Maine

Isabel Gilbert | Angelo State University

Hemangiosarcoma in Canines: A Personal Case Study in Disease Progression and Therapy

Yuto Goto | McLennan Community College

Exploring the Impact of Salt on Protein Aggregation Kinetics in Familial Alzheimer's Disease Mutations

Andrea Granados | Midwestern State University

Protein Characterization of Redbud (*Cercis canadensis*) Tree Seeds

Kai Jones | Southeastern Oklahoma State University

PotrAid: An AI-Driven Portrait Assistant for Professional-Quality Image Composition

Jaspal Singh Kahlon | Texas A&M University - San Antonio

Exploring Binding Between the Cry1Ab mutant F328E and its Cognate Receptor EC12

Kareena Kamal | University of Texas at Dallas

Bacteriophages: The Champions Rivaling Antibiotics

Andrew Klayman | San Jacinto College

Examining Growth Media Differences on *Helicobacter pylori* Urease Kinetics and AHA Inhibition Mechanisms

Kimiya Noor | Emporia State University

Poster Session Information

4:00PM-6:00PM
Union 333

STEM(Cont.)

Developing an Interactive Platform for Nutritional Education and Wellness Promotion

Tsneem Sallam | University of Houston-Downtown

Barcelona as a Blueprint: Integrating Architectural and Urban Identity to Future Urbanism

Angela Uribe | The University of Texas at Arlington

Unraveling a Decade of Mosquito Species Localization in Harris County

Zara Usman | University of Houston-Downtown

The Inevitable Effects of Caffeine on the Body's Circadian Rhythm

Skyler Adams | San Jacinto College

Engineering virus-like particles to target triple-negative breast cancer

Madison Adams | University of Texas at Tyler

Determining the role of fatty acid binding proteins 2 & 4 (FABP2 & FABP4) in lytic KSHV replication

Samar Ahmed | University of Texas at Dallas

Toxins on Our Plate: Is the FDA Serving Their Purpose?

Vanessajane Bayna | Northeast Texas Community College

Foundation of Calculus: The Legacy of Rene Descartes

Tanya Celestial | San Jacinto College

Caption Snap

Stephen Craig | University of Texas at Tyler

The Relationship between Improper Integration and Blackholes

Ethan Dyer | Rose State College

Unlocking the Future: Harvesting Asteriods and the Implications

Rykir Evans | Midwestern State University

#GPHC2025 19

Poster Session Information

4:00PM-6:00PM
Union 333

STEM(Cont.)

The Role of Primary Cilia and mTOR Pathways in Oligodendrocyte Development

Lynn Farhat | University of North Texas

Animal Testing

Nathan Hannemann | San Jacinto College

Enumeration of Cyclic Permutations in One-Line and Cycle Notation

Millie Jeske | University of Texas at Tyler

Recycling Education in Texas Schools

Caroleena Mancilla | Texas A & M University - San Antonio

Novel hydrophobic-tagging molecules for targeted protein degradation

Margaret Manning | University of Texas at Tyler

Moral Obligations: Physician Provision of Holistic Medical Care for ?Unaccompanied Immigrant Children

Elizabeth Martin | Missouri Southern State University

The Effects of Genetically Modified Food and Chemical Additives to the Health of the United States' General Population: A Quantitative Study.

Rachel Marvin | McLennan Community College

Standardization and Modeling of Push-Out Tests: Evaluating Bone-Implant Interfacial Properties in Non-Diabetic and Diabetic Lewis Rats

Rohan Raja | University of Texas at Dallas

Samuel Loyd's Fifteen Puzzle

Melissa Rodriguez-Sanchez | University of Texas at Tyler

Tackling Modern Challenges with the All-in-AI Lamp

Sunisa Saeli | Dallas College

#GPHC2025 20

Poster Session Information

4:00PM-6:00PM
Union 333

STEM(Cont.)

Efforts Toward the Synthesis of Sophorolipid-based Cavitands Glycoconjugates as Potential Oil-Recovery Enhancing Agents

Luis Segovia | Angelo State University

Polybius - Emulating the Ephemeral

Peyton Stein | Rose State College

Investigating clinical correlations of dental early or late implant failures and crown retention systems

Medha Sundar Rajan | University of Texas at Dallas

Microplastics and the Human Body

Kala Weatherill | San Jacinto College

EEG Signal Decomposition and Recognition: Lightweight Wearable Solutions for First Responders

Gabriel Worcester | University of Missouri - Kansas City

Childhood vaccine exemption predictors in Texas Counties.

Funmi Owolabi | University Of North Texas

Analyzing The Potential of Solar Power Within Developing Nations Cont.

Delaney Cruzan | Rose State College

Boe Paper Award

Under 60 Credit Hours

Maggie Burnett | Lone Star College - Montgomery

The Beef Industry Environment: An Econometric Study of Variables Affecting the Price of Beef

This study determines whether economic relations, a competing industry, supply inputs, or substitute goods, have had a greater impact on the price of beef over the last 20 years. Beef was chosen as the center for this study since it is a household staple and grocery price increases continue to be a national concern for consumers. Studies published within the last 20 years, fully address the relationship between prices and supply lines; however, there is little research into product and goods price relationships. To understand the correlation of prices on a consumer level, individual products were chosen as follows: economic relations, including inflation and Covid-19; competing industries, such as milk and cheese and related products; supply inputs, such as gas and corn; and lastly, substitute goods, including pork, chicken, and fish and seafood. The price data was found using the Bureau of Labor Statistics. With the aim to include Covid as a variable, three regression analyses were run: January 2004-September 2024, January 2004- March 2020, and April 2020-September 2024. The results show that pork is the highest correlating individual good and substitute goods have the largest amount of individual goods with reliable statistics. Further backed by the Supply and Demand theories, this result showcases the importance of understanding what economic level a product's price is most affected by and what products act in a similar manner. Future research into other grocery products could lead to greater price understanding and offer government officials and retailers insight on developing pricing interventions.

Boe Paper Award

Under 60 Credit Hours

Eleanor Buchan | Lone Star College - Kingwood

Delivering with Dignity: Doulas Bridging Systemic Gaps in Patient Care in Texas Public Hospitals During the 1970s

This study investigates indigent patient care in Houston public hospitals during the 1970s with an aim to examine the role of societal and institutional pressures in defining and framing doulas as caretakers during labor and delivery. Charles Rosenberg proposed that diseases can be socially framed after society agrees to name them. Using Rosenberg's conceptual model of framing disease, this analysis focuses on how the broader societal movements of the late 20th century, including the medicalization of birth, countercultural movement, second-wave feminism, sexual revolution, and the natural birth movement, converged with the institutional challenges of nursing shortages, underfunding, overcrowding, and the teenage pregnancy epidemic to shape the role of doulas. Women supporting each other during childbirth have existed for a millennium, but it was not until 1969 that Dana Raphael coined the term "doula," allowing the role to be shaped by society. The Jefferson Davis Hospital became the stage for a pivotal study (1991) on doulas' positive impact on obstetric outcomes, positioning doulas as a novel and effective treatment responding to systemic gaps in care and cultural concerns with hyper-medicalization. Soon after, Doulas of North America (DONA) was founded (1992) and the term "doula" was officially added to dictionaries. Considering the evolution of doulas into official caregivers, further research could examine the reframing of doulas in the 21st century and apply Rosenberg's framework to the development of other professions after being named.

Boe Paper Award

Under 60 Credit Hours

Beth Lasco | Lone Star College - Montgomery

Houston Independent School District Under the New Education System: An Analysis of Reform Effectiveness

This study examines how Houston Independent School District's (HISD) Superintendent Mike Miles' New Education System (NES) has addressed the issues that led to the Texas Education Agency's (TEA) reform of HISD and evaluates its success through key performance indicators, including standardized test scores and teacher retention over the past academic year. HISD's reform stemmed from five years of underperforming State of Texas Assessments of Academic Readiness (STAAR) scores and tax governance issues. In response, the NES focused on establishing a uniform curriculum, standardized testing, and performance-based incentives designed to improve academic outcomes. Quantitative and qualitative analyses were done to examine the impacts of the NES, focusing on student achievement and teacher retention. Despite some improvements in standardized test scores, such as a gain in English 2 on the STAAR exam, the system has faced significant criticism, particularly regarding the high rate of teacher turnover and student dissatisfaction. HISD's data reveals a 91% increase in teacher resignations, highlighting concerns about job insecurity, lack of autonomy, and the pressures created by the NES's demands. While the NES shows short-term academic improvements, its long-term success is uncertain, as it fails to address the systemic issues impacting teacher support and student engagement. This study concludes that educational reforms must balance academic outcomes with the inclusivity and support of teachers and students to achieve sustainable, meaningful change in HISD. Further research should explore how large-scale education reforms can be evaluated and the importance of considering both academic and human factors in measuring their success.

Boe Paper Award

Over 60 Credit Hours

Blythe Meacham | Angelo State University

Beyond the Female Gothic: Wild Women in Charlotte Dacre's *Zofloya* and Emily Brontë's *Wuthering Heights*

The late eighteenth and early nineteenth centuries gave rise to what critics have called the Female Gothic, in which primarily female authors create heroines who triumph over their opposition through a cultivated sense of innocence and virtue. Charlotte Dacre and Emily Brontë, however, depart from this tradition in the portrayal of their heroines. Both Victoria in Dacre's *Zofloya*; or, the Moor and Catherine Earnshaw in Brontë's *Wuthering Heights* disrupt the boundaries of domesticity typically assigned to women through their engagement with natural passions as opposed to the civilizing forces of reason and virtue. These novels further blur boundaries through depictions of the heroine's relationship with men whose cultural identities complicate a strictly delineated British social structure. *Zofloya* and Heathcliff come to represent the most untamed and even violent aspects of the heroine's characters. Dacre and Brontë differ from each other, however, in their final treatment of such heroines. Dacre's Victoria suffers the ultimate punishment – eternal damnation – while Brontë's characters face a more ambiguous fate. Through a reading of *Zofloya* and *Wuthering Heights* alongside the cultural contexts of women's education and colonial expansion in their time periods, this paper argues that Dacre and Brontë challenge the conventions of the Female Gothic to reveal the interplay between conceptions of natural and civilizing forces play a role in shaping human lives, particularly women and those perceived as "other."

Boe Paper Award

Over 60 Credit Hours

Sarah Coblentz | Southeastern Oklahoma State University

Watchfires of Freedom

The Watchfires of Freedom were political protests led by members of the National Woman's Party in 1919 advocating for the women's suffrage amendment. The protestors lit fires in front of the White House to burn Woodrow Wilson's speeches. Woodrow Wilson's administration censored media coverage of the protests and the protestors. Newspapers did not cover, negatively portrayed, or inaccurately depicted the actions of the protesters. The protesters arrested were given reduced sentences to reduce international and domestic attention to their actions and lessen the spread of dissent against Wilson's policies. As a result of his actions, the protests of the women's suffrage movement were overshadowed. The Watchfires of Freedom and the actions of the protesters are examples of Alice Paul's strategy to gain national attention for the women's suffrage movement.

Nixon Gorka | The University of Texas at Tyler

"The Last Penumbra of Empire:" Imperialism and the British Foreign Intelligence Service

By the end of the Cold War, the power Britain once had at the turn of the nineteenth-century was no more, and British intelligence was the last vestige of a fallen empire. Formed specifically for the advancement of British territorial possessions, the British Foreign Intelligence Service underwent great change from its conception in the Elizabethan Era to the 1990s: morphing from a second rate service, trusted with little more than minor surveillance operations, to what MI6 deputy chief Sir Gerry Warner considered "the last penumbra" of the British Empire. Using secondary sources, archival material, and British literature, this paper follows the historical changes in British intelligence gathering and concludes that it was not MI6's covert actions that kept the illusion of the powerful British Empire alive during the Cold War, but rather its depiction in popular media such as spy novels.

Oral Presentations

Gateway 041

9:00AM-9:50AM Addressing Social Inequities and Reform

The Astrodome and its Role in the Desegregation of Houston Texas

Summer Plutae | San Jacinto College

Disparity in Access: The Impact of Library Availability in Houston Independent School District

Madelyn Snow | Lone Star College - CyFair

The Children are for sale: Strengthening Legal Frameworks to Combat Underage Sex Trafficking in Houston

Belen Leal | Lone Star College

Environmental racism: A physical and societal barrier

Patricia Oppong | Johnson County Community College

10:00AM-10:50AM Environmental Degradation and Its Societal Impacts

Cypresswood's Sediment Problem

David Crocker | Lone Star College

Harmful Algal Blooms (HABs): A Winter Analysis

Fernando Dourado Vasconcelos | Johnson County Community College

Amazon Burnings: The government inaction affects people

Melissa Jancko Gallardo | Emporia State University

The Universal Soil Loss Equation: Mitigating the Effects of Ocean Acidification on Coral Reefs in the Florida Keys

Samantha Lo | Lone Star College Montgomery

11:00AM-11:50AM Mental Health and Emotional Well-Being Across Life Stages

Postpartum Mental Illnesses

Kelli Christ | Hutchinson Community College

Beyond Entertainment: How Tomorrow Sheds Light on Suicide and Mental Health in South Korea

Mathias Mansfield | Johnson County Community College

The importance of Social Skills during adolescence

Jorge Najera Lopez | San Jacinto College

The effectiveness of religious coping in minimizing anxiety during the COVID-19 pandemic

Jalecia Thompson | Midwestern State University

#GPHC2025 ²⁷

Oral Presentations

Gateway 042

9:00AM-9:50AM Addressing Trauma and Recovery in Vulnerable Populations

Imaging Suspected Child Abuse: Diagnostic and Ethical Concerns

Paige Cartwright | University of North Texas

Healing Together: a Holistic Approach to Trauma Recovery

Amara Christenson | Missouri Southern State University

Beyond the Battlefield: The Burden of Traumatic Brain Injuries in the Armed Forces

Angela Deneke | NorthWest Arkansas Community College

Foster Care System

Danica Schettler | Emporia State University

10:00AM-10:50AM Evolving Identities and Movements in Modern Society

"It's the safer route.": Exploring Mostly-Straight Men's Attraction Patterns and Life-Fulfillment

Phong Pham | University of North Texas

Lesbian and Gay Alliances During the AIDS Crisis and Their Lasting Influence on the Modern LGBTQ+ Community

Kaci Wainscott | Angelo State University

The Power of a Shade: Red Lipstick in Feminist Movements

Nasey Galeas | Lone Star College

Modernization of the feminist movement

Yathsel Zamora | San Jacinto College

11:00AM-11:50AM Navigating Modern Challenges: Environment, Society, and Security

Self-Esteem, Social Scenes & Spending Sprees: Materialism Across College Cohorts

Angelina Miljanic | University of North Texas

From Failure to Dream: The Banking Perspective

Faith Shagula | West Texas A&M University

Facing the Future: The Climate Crisis

Isabel Abt | University of Missouri - Kansas City

Drone Terrorism: Balancing Security and Civil Liberties

Jim Clayton | University of Texas at Tyler

#GPHC2025 28

Oral Presentations

Gateway 043

9:00AM-9:50AM Advancements in Microbiome Research and Analytical Techniques

Revolutionizing Health Through Gut Microbiome

Selva Vinodhini Dean | McLennan Community College

The Role of the Gut Microbiome in Long Covid: Investigating targeted microbial interventions for treatment

Ayesha Asghar | Lone Star College Montgomery

Effect of different glucose concentrations in a salt medium on the calcite secreted from the sporulation of *Bacillus megaterium*

Jia Patel | University of Missouri - Kansas City

UV/VIS spectrophotometry for kinetic study of the Dushman reaction

Lily Sowell | Lubbock Christian University

10:00AM-10:50AM Exploring Human Perception and Social Dynamics

Swipe Right to Kill: An Analysis of Online Dating Platforms' Contributions to Violent Crimes

Tyler Bobo | Lone Star College

How Do Community College Students Perceive Global Violence? Relating Affect/Cognition and the Conflict in Gaza

Jada-Kai Johnson | Lone Star College

Mirrors Do Not Equal Our Reflection

Cecilia Najera | San Jacinto College

Abstract: The Brave Heart: How Vulnerability Fosters Connection, Compassion, and Courage

Yathsel Zamora | San Jacinto College

11:00AM-11:50AM Personal Journeys

A Day in the Life of a Student with ADHD Storybook

Emily Maxwell | Emporia State University

Pathways to Medicine : My JAMP experience

Asher Nowak | West Texas A&M University

Turning Obstacles Into Ambition: My Journey as an Undocumented Student

Aranza Ortega Vargas | Dallas College

Travel Writing in Scotland and England

Hailie Pittman | Southeastern Oklahoma State University

#GPHC2025 29

Oral Presentations

Gateway 044

9:00AM-9:50AM Contemporary Issues in Texas Through the Humanities

Cowboy Conservation: The Novels of Elmer Kelton and Larry McMurtry in a Post-Cowboy Era
Mary-Faith Wilson | Northeast Texas Community College

Tort Law in Texas: A Comparative Study of Dental and Surgical Medical Malpractice Lawsuits and the Need for Tort Reform

Jackie Galvan | Lone Star College-CyFair

Honors and Niche Cinema: Reflections on the Making of our Film, Crude Conquest: Toxification and the Triumph of Big Oil in Texas, 1935-1980

Yahir Garcia | Northeast Texas Community College

Both Boon and Curse: Water and Sanitation on Frontier Posts in Texas

Daisy Herr | Angelo State University

10:00AM-10:50AM Exploring Identity and Perception through Historical Narratives

Shattering Silence- The Fight for Identity and Resilience in A Thousand Splendid Suns

Gurpreet Kaur Goraya | Lone Star College- University Park

Empowered by the Divine: Representations of Women in Nubian Art and Society

Marian Mock | Lone Star College- Montgomery

Creating History Through Storytelling in "Absalom, Absalom!"

Jeremy Nichols | University of Texas at Tyler

Gothic Confessions: Literary Form and Human Perception in Wieland (1798) and Private Memoirs and Confessions of a Justified Sinner (1824)

Avery Schafer | Angelo State University

11:00AM-11:50AM Perspectives on Conflict and Identity in the Middle East

Challenging Misconceptions of Arab Women: A Qualitative Content Analysis of Instagram Profiles of Independent Female Palestinian Journalists

Halla Allam | Emporia State University

Visualizing a Crisis: An Individual, Personal Account

Nancy Jaime | West Texas A&M University

Jewish Life and Strife in Early World Civilisations

Paige Moody | Dallas College

Israeli Settlement Expansion and U.S. Involvement: A Case Study of 'Five Broken Cameras' (2011)

Jeramie Thomas | Southeastern Oklahoma State University

#GPHC2025 30

Oral Presentations

Gateway 046

9:00AM-9:50AM Criminal Justice

The Legalization and Regulation of Prostitution in the United States of America

Chelsea Maxwell | Southeastern Oklahoma State University

The Impact Sentencing Disparities have on K-12 Educators who commit Sex Crimes in America

Lauren Parker | University of Houston-Downtown

From Case to Legislation: The Krystal Baker Act

Caitlynn Snelson | San Jacinto College

10:00AM-10:50AM Historical and Cultural Impacts of Racial Dynamics

The Blackface Showman: A Look At The Influence of Minstrel Shows and Blackface on Pop Culture

Brianna Chavez | San Jacinto College

Beneath the Concrete

Daju Helaire | San Jacinto College

From Plantations to Paradise Lost: Slavery and the Animal Population in Early Modern Guadeloupe

Zoey Portugal | Lone Star College- Tomball

Post-Independence Colorism

Jennifer Rodriguez | University of Houston-Downtown

11:00AM-11:50AM Perspectives on Historical Power Dynamics

No Key? Break the Door Down: An Alternative Analysis of the Perry Expedition

Taryn Boyd | Lone Star College- Tomball

Some Kind of Liberties: Why Did Early Russian Constitutionalism Devolve into "Sham Constitutionalism"

Alex Chanaa | University of North Texas

Comparing the Values formed from Latino Movements in the U.S. and Mexico: A Most Similar Systems Design (MSSD) Approach

Elijah De Leon | Lone Star College

Pirates in Africa

Cora Martin | Oklahoma State University

Oral Presentations

Gateway 047

9:00AM-9:50AM Cultural and Social Dynamics in Music

A Brief History of Musical Notation

Samantha Cartagena | Grayson College

The Cradle of Jazz: An Analysis of Jazz Cultural Misappropriation in American Newspapers

Frank Atienza Coronado | Lone Star College- Tomball

Musical Instruments in British Colonies

Allysa Bautista | Lone Star College-CyFair

Misogyny in the Music Industry

Mercury Metcalf | San Jacinto College

10:00AM-10:50AM Historical Figures and Their Lasting Legacies

Before Silicon: Charles Babbage and the Birth of Mechanical Computing

Jacob Verret | Lone Star College Kingwood

Ida B. Wells: Resistance through Shining Truth

Nadia Moutria | Northwest Arkansas Community College

'I Do Not Repent the Blow I Struck': The Symbolic Weight Behind Booth's Selection of Weapons

Edgar Rubio Hernandez | Lone Star College

11:00AM-11:50AM Philosophical and Cultural Critiques of Morality and Tradition

For the Sake of Tradition: Federico García Lorca's Critique of Francisco Franco's Spanish

Sasha Joy | Emporia State University

Pride as the Antithesis to Virtue: More, Spenser, and Milton's Differing Definitions of Sinful Pride

Matthew Garner | Angelo State University

Intent vs. Accountability: A Kantian Analysis of Moral Responsibility

Amarachi Nwafor | Lone Star College- Cyfair

The Dichotomy Of Honor: Analyzing The Depiction Of Samurai And Bushido Code Values In The Videogame Ghost Of Tsushima

Brennan Wharton | Lonestar College

Oral Presentations

Gateway 048

9:00AM-9:50AM Cultural Expressions and Preservation Across Time

Endocannibalism: A Death Practice Condemned as Unvirtuous

Madison Talkington | Lone Star College-University Park

Unfinished and Untitled: The Unashamed Expression of Art from the AIDS Epidemic

Hannah Bankhead | Angelo State University

Preserving History: Conservation Research and Treatments on a 1930s Oil Painting

Hannah Jones | Angelo State University

Grinding Traditions: A Critical Analysis of the Molcajete in Mexican Gender Roles and Indigenous Identity

Rodrigo Mendez Santos | Lone Star College

10:00AM-10:50AM Impacts of North American Expansion

Rescued or Recaptured? Understanding the Political Manipulation of Cynthia Ann Parker's Story

Andrea Castro | Lone Star College

The Beaver Effect: Exploring the Beaver's Role the Lewis and Clark Expedition and the North American Fur Trade, 1804-1850

Khoi Tran | Lone Star College - CyFair

Horses in Comanche Society

Kendall Trevino | The University of Texas at Arlington

The American Railroad Boom and Buffalo Extinction

Anthony Martin | San Jacinto College

11:00AM-11:50AM Religion and Society

Reaching for The Heavens: The Impact of Religion on America's Quest for Space

Andrew Higgins | Northeast Texas Community College

Designing a Culture: How Spanish Catholic Architecture Shaped Filipino Religious Culture

Reese Pangan | Lone Star College - Tomball

The Role of Purity in Shaping the Female Gender: Religious Ideals and Historical Transformations

Emma Hamblin | Southeastern Oklahoma State University

The Use of Religion to Support an Argument in The Song of Roland and The Book of the City of Ladies

Kai Jones | Southeastern Oklahoma State University

#GPHC2025 33

Oral Presentations

Gateway 051

9:00AM-9:50AM Cultural Heritage and Global Relations

Repatriation of The Elgin Marbles: Artifacts of National Identity

Bailey Grant | Missouri Southern State University

The Parthenon Marbles: Controversy Over Ownership, Cultural Legacy, and Preservation

Rosa Rodriguez | Lone Star College-CyFair

Examining the Social Responses in 'Farewell My Concubine' (1993): Finding an Ethnocentric Approach to U.S. Foreign Policy

Elizabeth Rubio | Lone Star College

Breaking Bonds: The Economic Domino Effect of the U.S.-China Trade Conflict

Huong Ta | Lone Star College-CyFair

10:00AM-10:50AM Innovations and Applications in Aerospace and Computational Research

The Evolution of Computing and Software for the Apollo Program

Pranau Narasimhan | San Jacinto College South

Advancing Research Impact: A Data-Driven Approach to Evaluation and Resource Optimization

Azwad Arif | Emporia State University

Computer Simulation of Annual Radiation Dosage Received by a Passenger on an Interstellar Spaceship

Aliyah Fleischman | Hutchinson Community College

Viability of Generalized Formulae for Aircraft Performance Chart Values

Alexander Garza | San Jacinto College

11:00AM-11:50AM Religion and Society

Growing up in a screen: The effects of growing up on reality TV

Madisyn Butler | Midwestern State University

Just When We Got it Right: The Transition to Sound in the Motion Picture Industry

Thomas Hardesty | Brazosport College

Digitalization, Culture, and Agency

Ethan Petersen | Northwest Arkansas Community College

What are Wii doing? The establishment of Nintendo's Marketing Strategies after World War II

Lindy Thompson | Lone Star College Cy-Fair

#GPHC2025 34

Oral Presentations

Gateway 052

9:00AM-9:50AM Economic Analysis of Pricing and Market Influences

Impact of the increase of Amazon Prime's monthly cost from \$12.99 to \$14.99 and annual membership price from \$119 to \$139 on Amazon's 2022 profitability

Nicole Obando | Midwestern State University

Price Determinants of White and Whole Wheat Bread: An Econometric Study of Market Influences

Mia Pierson | Lone Star College- Montgomery

The Economics Behind the Crunch: A two-decade analysis of lettuce price fluctuations

Roberto Portillo Osorio | Lone Star College

What America Runs On: A Regression Analysis of The Economic Factors Influencing Coffee Prices in the United States

Tiffany Simental | Lone Star College

10:00AM-10:50AM Innovations and Impacts in Language, Education, and Scientific Analysis

Writing Skills in the U.S

Aria Gaddis | Emporia State University

Modeling Pace of Play Using Monte Carlo Simulation

Clay Loper | Angelo State University

Intersections of Race and Language: The Racial Impacts of Standard Language Enforcement

Alex Mendoza; Sam Pueblos; Bridgitte Hernandez | University of Houston-Downtown

Improvements in Particle Accelerators Aimed at Optimizing Energy Output: An Extended Analysis on Multivariable Calculus Tools.

Roger Morales-Quintero | San Jacinto College

11:00AM-11:50AM Women's Roles and Representations Across History and Literature

Intertextuality: The Relationship Between Stories of Female Martyrs

Caydee Kennedy | Southeastern Oklahoma State University

The Role of American Women in World War I: Medical Approach

Blanca Kellerman Jimenez | University of Texas at Tyler

Dwelling in Possibility (Emily's Version): Emily Dickinson, Taylor Swift, and the Isolation of Fame

Ashleigh Lawrence | Brazosport College

A Comparison of the Portrayal of Powerful Women in the 14th and 15th Centuries

Dava Schreier | Southeastern Oklahoma State University

#GPHC2025

Oral Presentations

Gateway 053

9:00AM-9:50AM Enhancing Student Success and Well-Being in Higher Education

Wellness Wednesdays: A Semester of Weekly Relaxation, Awareness, and Connection for Students

Megan Folk | University of Texas at Tyler

Investing in Education: A Case for Financial Literacy

Sara Maldonado | University of Texas at Tyler

Artificial Intelligence in Higher Education

Addison McCortney | Southeastern Oklahoma State University

Exploring the Intersection of Family, Identity, and Education in Community College Students Through Stephany Cuevas' Ley de la Vida

Ashley Velasquez | Lone Star College

10:00AM-10:50AM Innovative Approaches to Healthcare and Epidemiology

Healing Through Heritage: Building a Culturally Inclusive Healthcare System

Alyssa Jerome | Missouri Southern State University

When Pixels Predict Pandemics: Using Virtual Worlds to Inform Epidemiological Studies

Ai Lan Nguyen | Lone Star College

Transforming Healthcare Through Patient-Centered Care

Emily Rolf | Emporia State University

Empowering Honors Programs to Address Healthcare Challenges in the Great Plains

Suryatej Vakkalanka | University of Texas at Dallas

Thank you

On behalf of the 2025 Great Plains Honors Council Conference Planning Committee there are several groups and individuals that we would like to thank for their dedication and support of this year's conference. Planning a conference like this is a monumental undertaking that is only possible through collaboration, teamwork, and a shared vision to create an experience that emboldens students to reach further. By seeing the greater possibilities of what this year's GPHC Conference could be the UNT Honors College thanks our dedicated partners!

The Great Plains Honors Council Executive Committee

President/Secretary- Ebonie Hill, Oklahoma State University

President Elect/Archivist- Ryan Dehl, Hutchinson Community College

Immediate Past President/Webmaster - Steve Garrison, Midwestern State University

Treasurer - Carrie Pritchett, Brazosport College

Student Representative - Vanessa Bayna, Northeast Texas Community College

The Boe Award & Britt Poster Award Judges

UNT Transportation Services

UNT Division of Student Affairs

Verde Catering

UNT Honors College Programming Council

UNT Enrollment Services

The Texas Academy of Mathematics and Sciences

The UNT CoLab

Texas Women's University Honors Program, For Hosting Denton Excursions

Dr. Mallory Moore

Bella Campbell

Miranda Adams

Maddie Ray

Leslie Umana

Madison Speight

Cheryl Uangbaoje